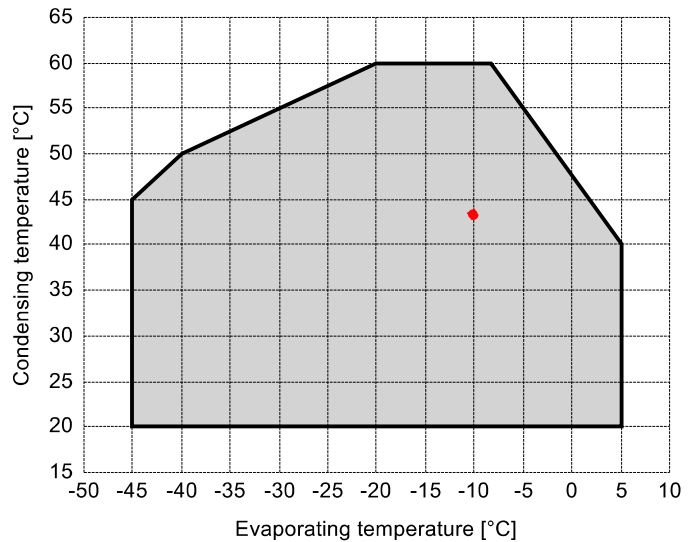


Input data

Refrigerant	R404A	
Reference temperature	Dew point temperature	
Calculation mode	Refrigeration / Air Cond.	
Operating mode	Subcritical	
Power supply	400/3/50	
Ambient temperature	°C	35
Liquid subcooling	K	3
Liquid temperature	°C	40,22
Evaporating temperature	°C	-10
Evaporating pressure	bar	4,34
Suction gas superheating	K	10
Useful fraction of superheating	%	100



Output data

Compressor :		EB-A075-0Y-1M
Number of compressors :		FSx1
Refrigerating capacity	kW	2,219
Condensing temperature (dew point)	°C	43,56
Evaporator capacity	kW	2,219
Power input (with fan)	W	1167
Condenser capacity, theor.	kW	3,316
Current	A	2,17
COP/EER (with fan)	W/W	1,9
Mass flow	kg/h	73
Operating frequency	Hz	50
Connection	-	DOL-STAR
Operating mode	-	100%
Discharge temperature	°C	76
Ratio (%)	%	100,0%
Note	-	
Oil flow	l/min	-
Heat Exchanged (oil Cooler)	kW	-
Oil Temp. at Oil Cooler Outlet	°C	-
Certified by	-	Frascold

Compliant with EU Ecodesign Directive 2009/125/EC - Regulation EU 2015/1095.

Certified by:

- Frascold Data

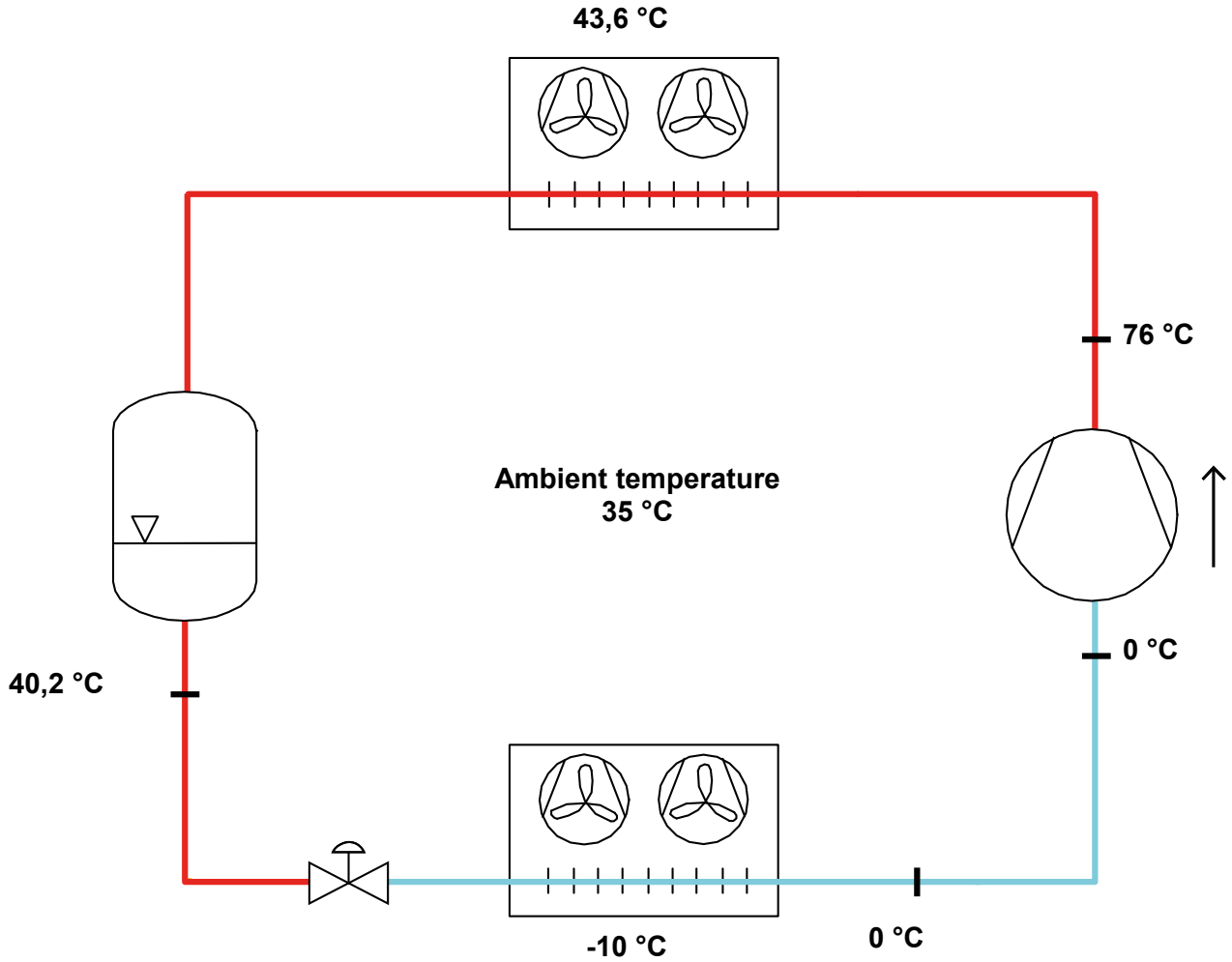


Legend:

- *ref: At conditions according to EN12900
- Suction gas temperature = 20 °C
- Liquid subcooling = 0 K

All data subject to change without notice

P&I Diagram:



All data subject to change without notice

Model: EB-A075-0Y-1M

Refrigerant: R404A

Power supply: 400/3/50 DOL-STAR

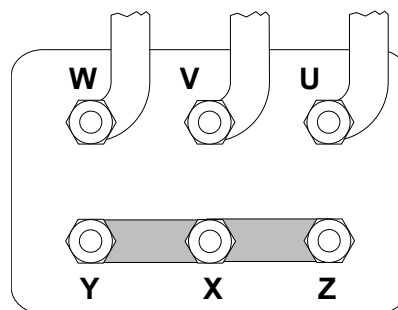
Technical data:

Compressor	
Compressor	A07-5Y
Displacement	4,93 m³/h
Nominal compressor speed	1450 rpm
Motor voltage	400 V
Nominal operating frequency	50 Hz
maximum allowed operating current (MRA)	2,7 A
locked rotor current (LRA)	10,7 A
Number of pistons	2
Net weight	36 kg
Lubricant	FRASCOLD POE32
Oil charge	1 l
Condenser	
Volume	0,7 l
Fan motor	
Number	1
Power supply	230/1/50
Max power input (x1)	160 W
Max Current (x1)	1,35 A
Liquid receiver	
Code	USLR02
Volume	1,5 l
Net weight	
STANDARD	67 kg
with housing	89 kg

Sound level:

*half sphere model

Motor connections:



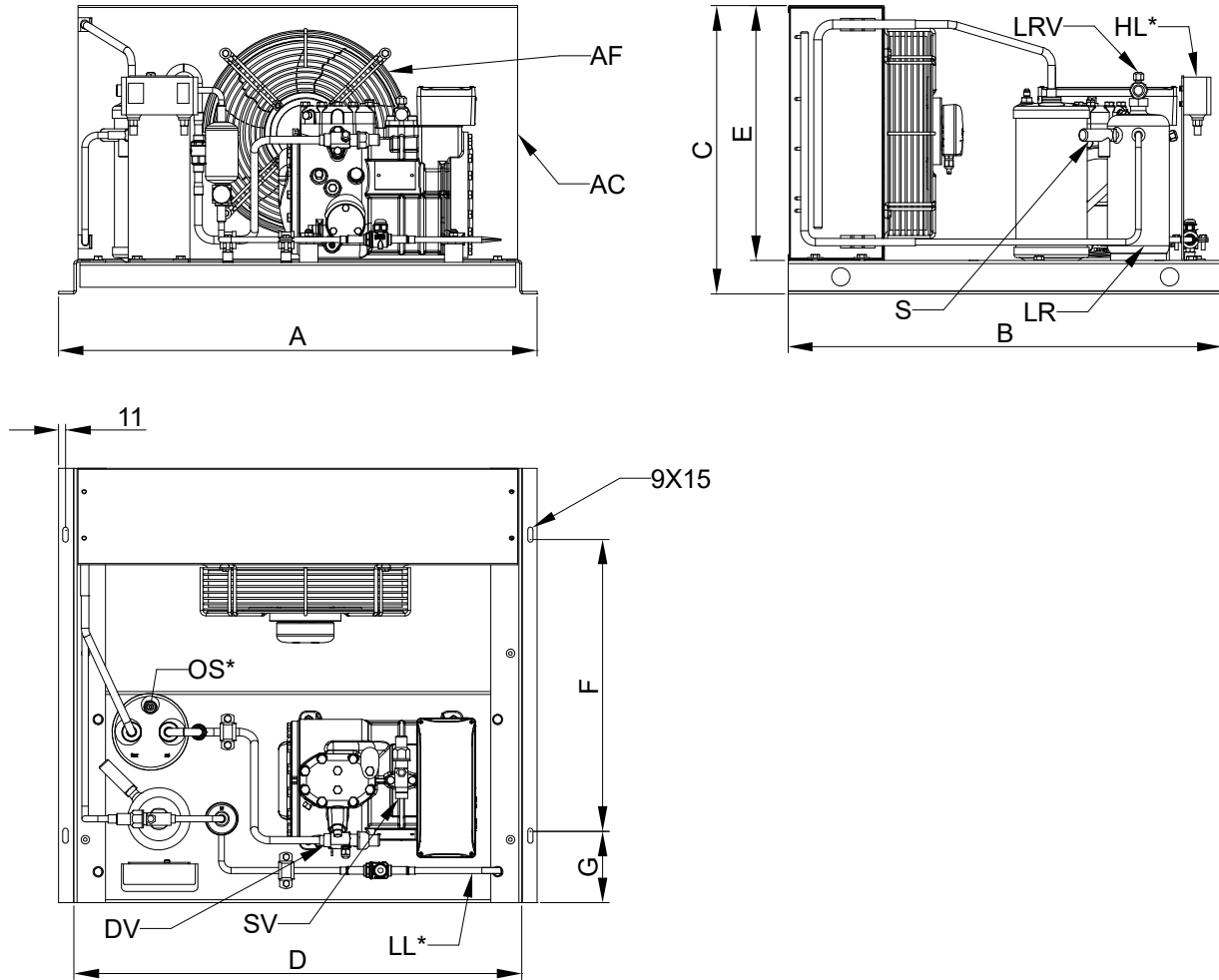
All data subject to change without notice

Model: EB-A075-0Y-1M

Refrigerant: R404A

Power supply: 400/3/50 DOL-STAR

Dimensions:



Legend:

SV: Suction Valve	15,8 mm - 5/8" inch	
LRV: Liquid valve	9,5 mm - 3/8" inch	S: Safety Valve
A: Length	771 mm	AC: Condenser
B: Width	660 mm	AF: Fan motor
C: Height	463 mm	DV: Discharge valve
A: Length(with housing)	771 mm	LR: Liquid receiver
B: Width(with housing)	684 mm	OS*: Oil separator
C: Height(with housing)	486 mm	EB*: Electric box
D: Base length	721 mm	HL*: High/Low pressure switch
E: Condenser Height	410 mm	LL*: Liquid line
F: Base mounting	470 mm	*Package
G: Base mounting	115 mm	

All data subject to change without notice

Model: EB-A075-0Y-1M

Refrigerant: R404A

Power supply: 400/3/50 DOL-STAR

Polynomial coefficients according to EN12900 for A07-5Y:

*S = T_{evap} ; D = T_{cond}

Reference conditions

Refrigerant	R404A
Ambient temperature	32 °C
Suction gas temperature	20 °C
Liquid subcooling	3 K
Frequency	50 Hz

	Refrigerating capacity [W]	Power input [W]
C1	7,394260E+003	1,442550E+002
C2	2,705180E+002	-3,667500E+001
C3	-9,557370E+001	3,611800E+001
C4	3,298350E+000	-9,403840E-001
C5	-2,902730E+000	1,294470E+000
C6	1,200750E-001	-3,094570E-001
C7	1,178780E-002	-6,263010E-003
C8	-2,580360E-002	1,203080E-002
C9	1,849770E-003	-4,095160E-003
C10	8,511030E-004	1,469620E-003

All data subject to change without notice

Seasonal efficiency calculation according to EU Regulation 2015/1095

Model: EB-A075-0Y-1M

Refrigerant: R404A



Item	Symbol	Value		Unit
Evaporating temperature	t	-10	-35	[°C]

Parameters at full load and ambient temperature 32°C (Point A)

Rated cooling capacity	P _A	2,511	0,691	[kW]
Rated power supply	D _A	1,14	0,668	[kW]
Rated COP	COP_A	2,2	1,03	[-]

Parameters at part load and ambient temperature 25°C (Point 2)

Declared cooling capacity	P ₂	2,875	0,829	[kW]
Declared power supply	D ₂	1,075	0,672	[kW]
Declared COP	COP₂	2,68	1,23	[-]

Parameters at full load and ambient temperature 43°C (Point 3)

Declared cooling capacity	P ₃	1,972	0,503	[kW]
Declared power supply	D ₃	1,23	0,661	[kW]
Declared COP	COP₃	1,6	0,76	[-]

Other Items

Capacity control	Fixed			
Power supply	400/3/50			
Fan speed regulation (Rated)	V	8		[V]
Reference temperature	Dew point temperature			
Suction gas temperature	toh	20		[°C]
Subcooling	SC	3		[K]

Declaration of conformity - Directive 2009/125/UE Ecodesign -Condensing units EB series: FDEC150